

# MONTHLY MEMBERSHIP PROGRESS REPORT

LOCATION NEBRASKA

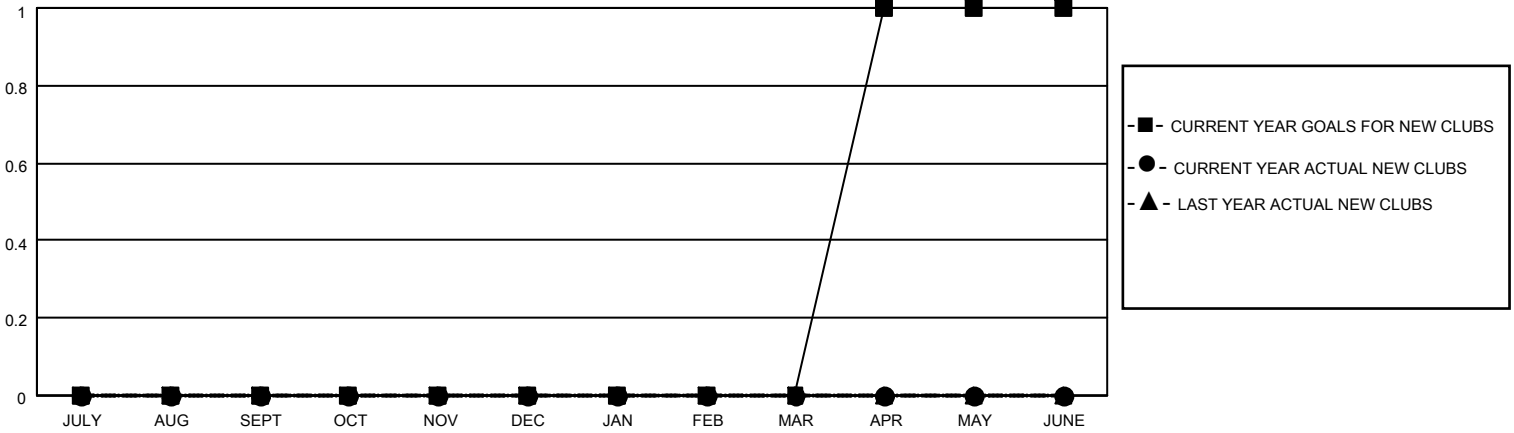
District 38 L

Results as of: 8/31/2022

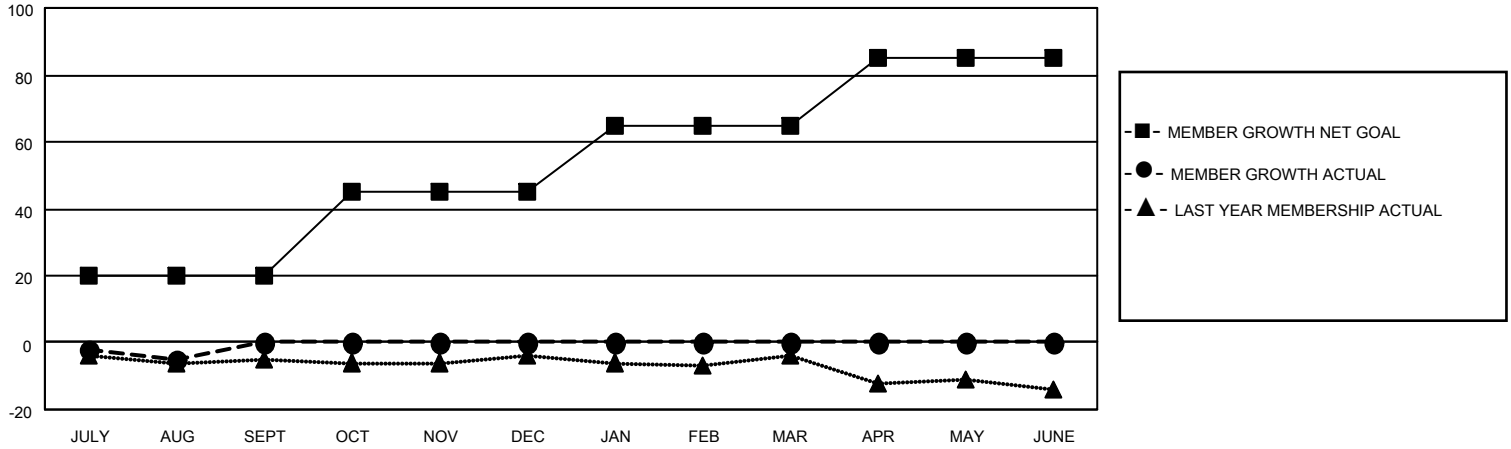
Clubs			
RESULTS FOR 2022-2023			
QUARTER	NEW CLUB GOAL	NEW CLUBS	DROPPED CLUBS
JULY/AUG/SEPT	0	0	0
OCT/NOV/DEC	0	0	0
JAN/FEB/MAR	0	0	0
APR/MAY/JUNE	1	0	0

Members			
RESULTS FOR 2022-2023			
QUARTER	MEMBER GROWTH NET GOAL	MEMBER GROWTH ACTUAL	DROPPED MEMBERS ACTUAL (including transfers)
JULY/AUG/SEPT	20	4	9
OCT/NOV/DEC	25	0	0
JAN/FEB/MAR	20	0	0
APR/MAY/JUNE	20	0	0

**GOALS AND ACTUAL NEW CLUBS CUMULATIVE**



**GOALS AND ACTUAL MEMBERS CUMULATIVE**



**DROPPED CLUBS: 0**

**4 CLUBS OF 38 ADDED 1 OR MORE NEW MEMBERS**

**GENDER DISTRIBUTION**

MALE	571 (73.39%)
FEMALE	207 (26.61%)
NON BINARY	0 (0.00%)
PREFER NOT TO ANSWER	0 (0.00%)

**DROPPED MEMBERS**

[CLICK HERE FOR CUMULATIVE MEMBERSHIP DATA](#)

DECEASED	1
CLUB CANCELLED	0
OTHER	8
<b>TOTAL</b>	<b>9</b>

TOTAL FAMILY UNIT MEMBERS 189

FAMILY MEMBERS PAYING HALF DUES 95